

» *probrake*

Installation Manual

Crash pads

Model: ATIC



probrake.de

General Safety Instructions for Installing Crash Pads

Installing crash pads requires technical understanding and solid mechanical skills. Incorrect installation can lead to serious accidents and damage to the motorcycle. Please observe the following safety instructions.

Before Installation

- Tools: Use only recommended, suitable tools.
- Know-how: Perform the installation only if you have sufficient knowledge.
- Questions or issues: Contact a workshop with appropriately qualified personnel.
- Stability: Secure the motorcycle stably on a paddock/maintenance stand.
- Read first: Read these instructions carefully and completely before installation.

During Installation

- Torque: Tighten screws to the specified torque values.
- Inspect parts: Check all components for damage before installation.
- No force: Work precisely and do not force components.
- First snap the absorber inlay into place with the wide side, then with the narrow side. When installed correctly, you will hear a distinct "click" sound.

After Installation

- Safety check: Verify the secure fit of all screws and components.
- Steering movement: Full steering lock must be free and unobstructed.
- Free movement: Align brake & clutch levers so they move freely and without play in every setting and position.
- Test ride: Perform a careful test ride and watch for irregularities.

General Notes

- Use only original or approved replacement parts.
- Perform regular checks for secure fit and wear.
- Damaged parts must be replaced immediately; otherwise proper function cannot be guaranteed. Any manipulation such as welding, soldering, bending, or drilling the levers is prohibited.
- probrake GmbH assumes no liability or warranty for any damage resulting from combinations with accessories not tested by probrake, from improper installation, or from insufficient maintenance.

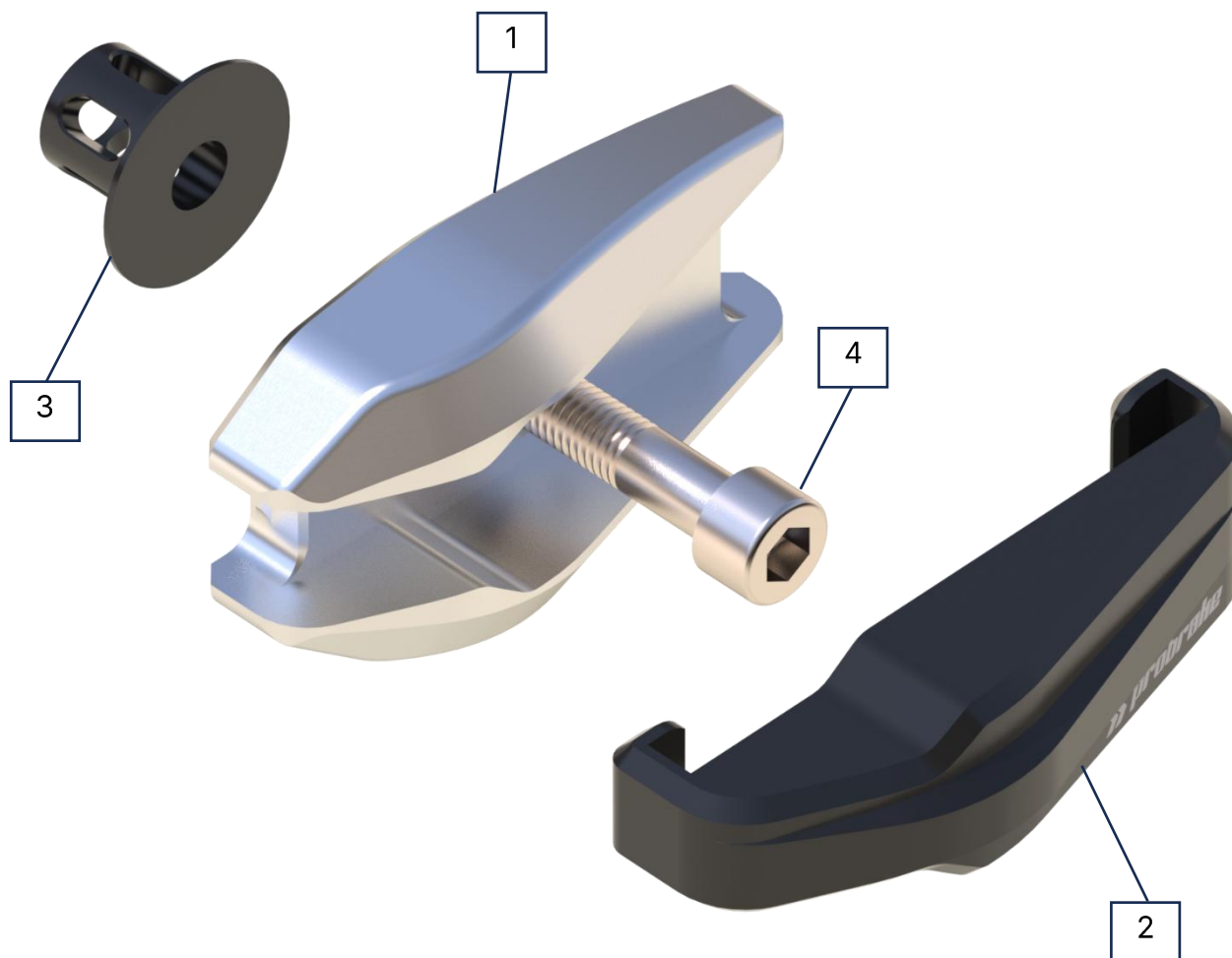


General Operating Permit



- The crash pads are registration-free.
- No ABE (General Operating Permit) or parts certificate is required.
- Outside Germany, different legal regulations may apply.

Scope of Delivery ATIC (per side)

1. Crash pad body ATIC
2. Absorber pad inlay ATIC
3. Absorber (optional: short base)
4. Cylinder screw (vehicle-specific)
5. Mounting kit (vehicle-specific, see separate enclosed installation guide)



General Installation Notes – ATIC Crash Pads

	<p>Preparation</p> <ul style="list-style-type: none">• Park the motorcycle securely.• Lay out tools within easy reach. <p>Installing the probrake Crash Pads</p> <ul style="list-style-type: none">• Pre-stage the individual parts according to the illustration.• Please install the crash pads one side at a time.• Never loosen the engine mount fasteners on both sides at the same time!• Support the engine during installation to prevent it from dropping!• Installing the mounting adapters is vehicle-specific and is carried out in reverse order of removal using the original or the supplied parts.• Observe the torque specifications and, if applicable, reinstall OEM screws, retainers, and nuts according to the manufacturer's instructions.• Observe the stipulations of the operating permit.• After the test ride, check all screws for tightness.• First snap the absorber inlay into place with the wide side, then with the narrow side. When installed correctly, you will hear a distinct "click" sound. <p>Special Notes for Installation</p> <ul style="list-style-type: none">• Each mounting kit includes, in addition to the general installation guide, a vehicle-specific installation guide. This must be observed.
	<p>If the vehicle manufacturer does not specify otherwise, observe the following torques:</p> <ul style="list-style-type: none">• M5 screws: 6 Nm• M6 screws: 10 Nm• M8 screws: 25 Nm• M10 screws: 49 Nm• M12 screws: 86 Nm• All screw connections must be secured with medium-strength threadlocker (exception: when using self-locking nuts).

Einbau: Start assembly with **Side 2** and continue with **Side 1**.

Ausbau: When removing, please followed the steps in reversed order.

If the attachment has been done correctly, a distinct "click" sound will be heard.



Here are some more probake quality products

STEEL BRAIDED HOSES



FOOTRESTS



BRAKE & CLUTCH LEVER



CRASH PADS & SAFETY



HANDLEBARS



BRAKE DISC & BRAKE PADS



ACCESSORIES & ATTACHMENT



STEEL BRAIDED KITS CARS



probrake GmbH
Fritz-Schieler-Str. 3
D-79331 Teningen

probrake.de

info@probrake.de

